

urmet

ENTRY
PANELS

synthesi steel

STEEL'S MOST
ELEGANT SHAPE



URMET IS IN YOUR LIFE

URMET

Urmet, established in Italy in 1958, designs, develops and markets products and systems for building automation. The company is a leading player in building automation and security thanks to its constant investment in technology research which simplify, reduce installation time and improve functionality in residential, tertiary and industrial sectors. A wide range of products offers solutions to living and working spaces with the specific requirements of each market.

Video-doorphone, doorphone, telephony , climate control, professional video-surveillance, anti-intrusion and fire-detection systems: a range of solutions to living spaces giving peace of mind and security, with the intelligence of technology and user-friendly automation – making everyday solutions even easier. Urmet with more 50 enterprises spread over more than 100 Countries all over the world with a diffused sales network.

URMET GROUP

The Urmet Group is a leading Italian provider with a strong international presence comprising over fifty companies that put together their expertise to offer global solutions to partners and customers. The Urmet Group designs, develops and markets products and systems in the communication and security sectors, as well as in energy management and saving and

telecommunications. In Italy it is the leading provider of video-doorphone and telephone systems, access automation and control, professional intrusion detection, anti-fire and video-surveillance systems; from private homes to town redevelopment planning up to large public infrastructures, the Group is a global partner reputed for product quality and service effectiveness.

ENTRY
PANELS

synthesi steel

Intro	05
Modular concept and accessibility	06
Beauty and functionality	08
Quality and sturdiness	10
Superior technology and functionality	12
Designed with installers in mind	14
Maintenance	17
Available modules	18-20
Sales network	22





Speaker grille and control buttons.

THOMAS
GREEN

TAYLOR
WILLIAMS

KHAN
KUSCONI



sinthesi steel

STEEL'S MOST ELEGANT SHAPE

Sinthesi Steel combines sturdiness and elegance. Urmet's new vandal resistant entry panel offers superior technology in a modern, attractive design.

Safer, with a steel structure that makes it resistant to acts of vandalism, impacts and infiltration of liquids. The buttons are flush with the panel, preventing damage to the entry panel external elements. The wide-angle colour camera offers a wide visual field.

More flexible, thanks to its pre-wired modules and flush-mounting boxes compatible with Sinthesi and K-Steel entry panels. Assembly of the entry panel modules does not require the use of work tools.

More attractive, thanks to the bright, unique look of polished steel and the white backlit buttons, which greet visitors with a sleek, modern appearance.

Sinthesi Steel has a wide range of functions and is compatible with Urmet's digital and analogue systems.

Think of what elegant strength looks like. Now its name is **Sinthesi Steel**.

SMARTER, STRONGER, MORE BEAUTIFUL

Unique design, innovative technology.

Beautiful and compact: instantly attractive

Sinthesi Steel is attractive, classy and features a streamlined, unique design: it's the perfect entry panel to welcome visitors in style. Its flush design and the absence of a mounting frame between each element lend Sinthesi Steel a compact and elegant look.

Modular and versatile: suitable for all types of buildings

Sinthesi Steel is compatible with Sinthesi and K-Steel metal flush-mounting boxes and can be used with the same analogue outside stations used by Sinthesi. The modules feature standard dimensions and can be freely combined. The panel has snap-on assembly, the only screws are located on the outer frame.

Accessible and interactive: designed for easy use by people with disabilities

The range includes speech synthesis modules, light indicators and systems that provide hearing assistance to hearing-aid users. Thanks to proximity and access control modules it is possible to open doors and gates without using any keys.

Sturdy and safe: it fears nothing and protects everyone

Sinthesi Steel's steel structure is impact-resistant (IK 09 rating) and liquid infiltration-resistant (IP 45 rating), which means it can withstand any atmospheric conditions. The wide-angle camera unit has a 120° angle of view. With the proximity sensor modules it is possible to grant fast access to authorised persons.



Main features

- Vandal resistant body, with flush buttons
- Compatible with Sinthesi and K-Steel flush-mounting boxes
- Wide-angle camera - 120°
- White back-lighting and customisable name tag colours
- Compatible with analogue Sinthesi outside stations
- Pre-wired modules
- Compatible with 5-wire, 4+n and 1+n Coax analogue systems
- Compatible with 2Voice, IPVoice and Bibus Vop systems

Ideal for

- Preventing damage from acts of vandalism
- Upgrading old systems
- Increasing safety and accessibility



EASY AND QUICK INSTALLATION

- Backward compatibility with Sinthesi and K-Steel boxes
- Analogue outside stations and accessories shared with Sinthesi entry panel
- Easy installation in digital systems through pre wired modules by flat cable

PERFORMANCE, STURDINESS AND STYLE CUSTOMERS CAN RELY ON

- Video unit with wide shooting angle and clear, sharp images
- Sturdy and resistant to acts of vandalism
- Clear, visible name tag backlighting featuring a sophisticated design that prevents eye strain



COMPATIBLE WITH



2Voice: the non-polarised 2-wire video-interphone system. 2 wires everywhere, advantages any way you look at it.



iPerVoice: the IP system with CAT5/5e/6 UTP cable and fiber optics for unlimited expansion and users.



Bibus VOP: doorphone and video doorphone mixed systems with 2 pairs of non-polarised wire.

DESIGN AT THE SERVICE OF SAFETY

Designed to combine beauty and functionality.

Sinthesi Steel's superior quality is born from an innovative and original idea: shape must be functional, as well as aesthetically pleasing. Sinthesi Steel's structure is the result of an integrated design developed thanks to the close collaboration of engineers and designers. The result is Sinthesi Steel: a stunning entry panel with surprising performance and highly resistant to attacks of any kind.

Polished finish

Sinthesi Steel is made in polished steel, which lends it a bright, eye-catching look. This type of finish also makes the entry panel easy to clean.

Flush structure

Even though Sinthesi Steel is modular, its outer part looks like a single piece. This gives the product a sturdy and compact look.

Flush-mounted elements

Sinthesi Steel's buttons are flush with the entry panel's structure in order to guarantee greater resistance to acts of vandalism and to reduce the area where dirt and dust may deposit.

Name tags and buttons

Maximum brightness thanks to white LED lighting for name tags and buttons.





OUTSTANDING QUALITY, GUARANTEED STURDINESS





Designed to endure anything. Forever.

Sinthesi Steel's structure is made in stainless steel to prevent corrosion. Its special design makes it a cutting-edge technological product.

Impact-resistant

Thanks to its stainless steel structure and simple assembly and configuration, Sinthesi Steel offers top-of-the-range performance certified as compliant with international standards. It features an IK 09 impact resistance grade: this means that, during resistance tests, it has withstood the impact of tools weighing 5 kg/11,02 lb from a distance of 20 cm/0,66 feet without damage.

Infiltration-resistant

Each module features a seal that makes the entry panel weather resistant. It features an IP 45 protection degree against liquids and fine dust. This means that solid objects with a diameter of more than 1 mm/39,37 mil and liquid jets will not penetrate inside the entry panel body. Perfect sealing of modules on the metal wall frame is guaranteed by a snap-on system.

Special screws

Sinthesi Steel features Torx head screws. This prevents anyone not possessing the special required tool from unscrewing them, reducing the risk of tampering by vandals or other people.

Tear-proof design

Name tag holders and buttons are flush with the structure, to prevent tampering or tearing by means of screwdrivers or prickers. In addition, name tags are made in self-extinguishing material.

SUPERIOR TECHNOLOGY AND FUNCTIONALITY

More protection, more functionality
and more usability for everyone.

Sinthesi Steel features a range of modules to expand its technical capability, to meet any functional need. Urmet's designers have focused their efforts on addressing safety issues, and they have worked hard to make this entry panel extremely easy to use. Great care has also been taken to address the needs of people with disabilities.



Wide-angle camera

The camera features a shooting angle of 120° (horizontal) and 90° (vertical). Installed 160cm/5,24 feet from the ground, it can frame people on wheelchairs, children and people who are trying to hide.





High-performance camera

The video module features a 1/3" colour, wide-angle CCD camera. The LED lighting system guarantees optimal visibility at night and in poor visibility conditions, while allowing considerable energy savings.

Beautiful and smart backlighting

Sinthesi Steel's buttons and other readable elements feature white backlighting, which lends the entry panel a sleek, modern look.

Designed for use by people with disabilities

Special speech synthesis modules and light indicators inform people with disabilities on the status of the system (ongoing call, speak, door open). In addition, ILA modules (Induction Loop Antenna) provide hearing assistance to users of hearing aids fitted with a "T" switch.

Safety and ease of access

The access control function is available thanks to the presence of modules fitted with a proximity sensor and numeric keypad. These allow to open gates and doors without using a key and help prevent unauthorised persons from accessing the building.



DESIGNED WITH INSTALLERS IN MIND

Easy to configure, assemble and install.

The modular nature of Sinthesi Steel is an advantage not only for users, but also for installers. The entire structure of the entry panel comprises only four elements, which can be assembled in one simple step. This is why it is also easy to configure and order it. In addition, Sinthesi Steel can use the same flush-mounting boxes used by Sinthesi and K-Steel.

Quick installation

The functional modules snap onto the wall frame, no tools are required. The hinge on the wall frame makes for easy wiring as it keeps each module perpendicular to the flush-mounting box.

Easy to configure

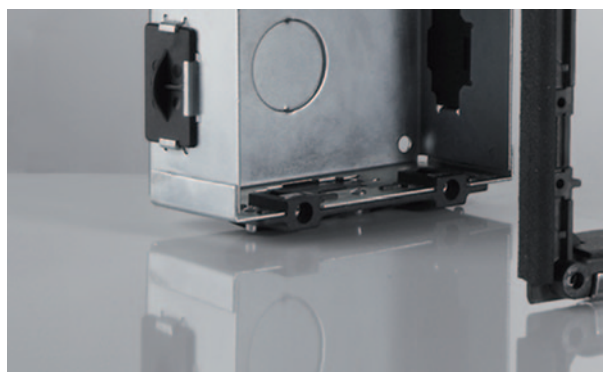
The Sinthesi Steel line is complete, yet simple: this means it includes a relatively small number of items, which are easy to configure and order. Errors are therefore considerably reduced.

Compatibility

With Sinthesi Steel, installers can use the equipment they already own and know: Urmet's new entry panel can use the flush-mounting boxes of Sinthesi and K-Steel. Installers can mount the plastic box into the wall, then choose whether to use the Sinthesi or Sinthesi Steel entry panel at a later time.

Multi-system

Sinthesi Steel is compatible with 2Voice and IPerVoice digital systems. For analogue installations, it is possible to use Sinthesi's analogue outside stations. For digital installations on 3-4 button modules the wiring is done with flat cables, which guarantee a quick and safe installation.







SIMPLE AND FAST MAINTENANCE

Routine operations that can be carried out by anyone.

Sinthesi Steel is easy to upgrade: adding electronic modules and replacing or adding name tags is easy thanks to its simple wiring and the high accessibility of its inner components.



Simplified name tag replacement

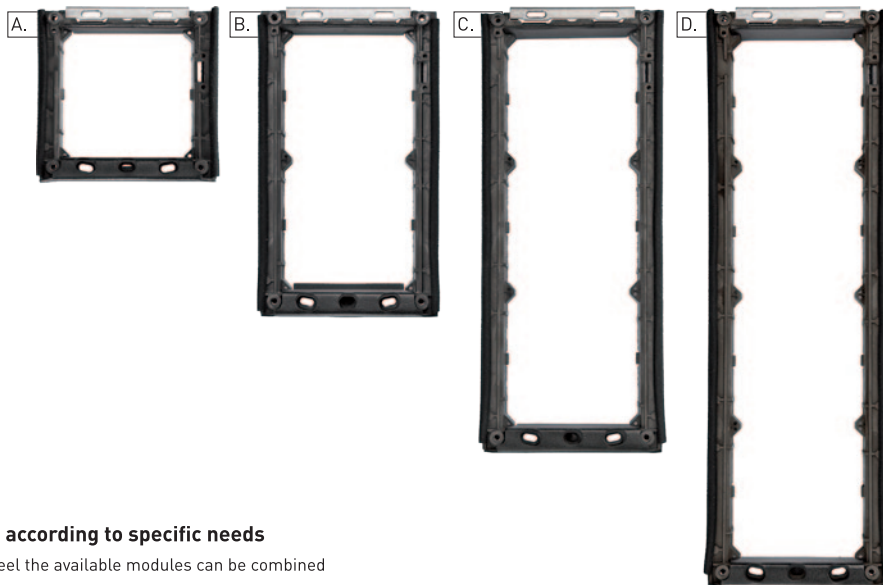
To access the name tag compartment, simply remove the frame and the button module front panel. Then replace or add a new name tag on the back of the button module front panel. The name tag area is entirely isolated from the wires, so name tag replacement operations are completely safe.

AVAILABLE MODULES

**The secret behind Sinthesi Steel's success:
a few, simple items**

4 frames available in different heights and 4 matching flush-mounting boxes. Obtain many combinations with just a few items. This is why Sinthesi Steel is an extremely versatile entry panel, which makes the installer's job much easier.

- A. 1158/61
- B. 1158/62
- C. 1158/63
- D. 1158/64



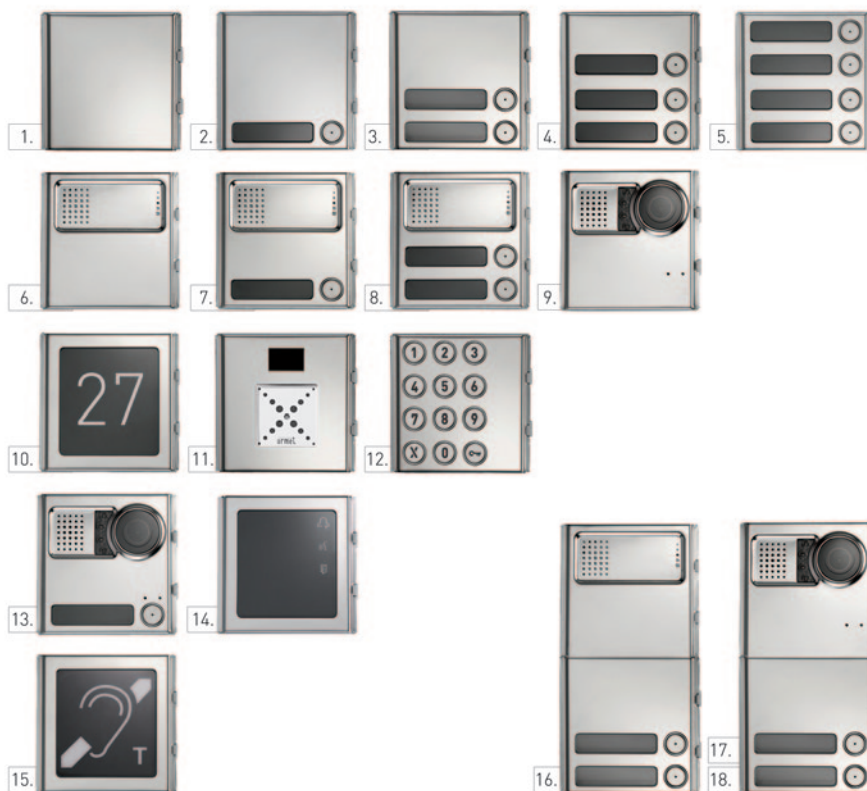
Configurable according to specific needs

With Sinthesi Steel the available modules can be combined to create the configuration that best suits the communication needs of a building, be it a small detached house or a large residential complex. For audio and video versions, the Sinthesi Steel line includes useful items such as a "door open" warning module, an induction loop antenna for hearing-aid users, a proximity sensor and a digital numeric keypad. The line also includes 3 modules for 2Voice and IPerVoice digital systems.

- E. 1158/44
- F. 1158/43
- G. 1158/42
- H. 1158/41



- 1. 1158/59
- 2. 1158/11
- 3. 1158/12
- 4. 1158/13
- 5. 1158/14
- 6. 1158/20
- 7. 1158/21
- 8. 1158/22
- 9. 1758/40
- 10. 1158/50
- 11. 1158/45
- 12. 1158/46
- 13. 1758/91
- 14. 1158/47
- 15. 1158/48
- 16. 1083/6
- 17. 1083/62
- 18. 1039/74



AVAILABLE MODULES

1158/61

One-module stainless steel frame with module support wall frame. Frame dimensions (H x W x D): 127 x 125 x 12 mm/5 x 4,92 x 0,47 inches.

1158/62

Two-module stainless steel frame with module support wall frame. Frame dimensions (H x W x D): 217 x 125 x 12 mm/8,54 x 4,92 x 0,47 inches.

1158/63

Three-module stainless steel frame with module support wall frame. Frame dimensions (H x W x D): 307 x 125 x 12 mm/12,08 x 4,92 x 0,47 inches.

1158/64

Four-module stainless steel frame with module support wall frame. Frame dimensions (H x W x D): 397 x 125 x 12 mm/15,629 x 4,92 x 0,47 inches.

1158/41

Iron one-module flush-mounting box. Dimensions (H x W x D): 118 x 118 x 45 mm/4,645 x 4,645 x 1,77 inches.

1158/42

Iron two-module flush-mounting box. Dimensions (H x W x D): 208 x 118 x 45 mm/8,188 x 4,645 x 1,77 inches.

1158/43

Iron three-module flush-mounting box. Dimensions (H x W x D): 298 x 118 x 45 mm/11,73 x 4,645 x 1,77 inches.

1158/44

Iron four-module flush-mounting box. Dimensions (H x W x D): 388 x 118 x 45 mm/15,275 x 4,645 x 1,77 inches.

1158/59

Polished steel blank module. Module dimensions (H x W): 95 x 90 mm/3,74 x 3,54 inches.

1158/50

Polished steel house number module. Dimensions (H x W): 95 x 90 mm/3,74 x 3,54 inches.

1158/11

Polished steel 1-button module. Module dimensions (H x W): 95 x 90 mm/3,74 x 3,54 inches.

1158/12

Polished steel 2-button module. Module dimensions (H x W): 95 x 90 mm/3,74 x 3,54 inches.

1158/13

Polished steel 3-button module. Module dimensions (H x W): 95 x 90 mm/3,74 x 3,54 inches.

1158/14

Polished steel 4-button module. Dimensions (H x W): 95 x 90 mm/3,74 x 3,54 inches.

1158/20

Polished stainless steel loudspeaking unit ready module without buttons. Module dimensions (H x W): 95 x 90 mm/3,74 x 3,54 inches.

1158/21

Polished stainless steel loudspeaking unit ready module with 1 button. Module dimensions (H x W): 95 x 90 mm/3,74 x 3,54 inches.

1158/22

Polished stainless steel loudspeaking unit ready module with 2 buttons. Module dimensions (H x W): 95 x 90 mm/3,74 x 3,54 inches.

1158/40

Stainless steel module with 50 Hz 1/3" colour wide-angle (120°) CCD camera unit. Dimensions (H x W): 95 x 90 mm/3,74 x 3,54 inches.

1158/91

Stainless steel module with 50 Hz 1/3" colour wide-angle (120°) CCD camera unit, integrated loudspeaking module, with 1 button. Dimensions (H x W): 95 x 90 mm/3,74 x 3,54 inches.

1158/45

Stainless steel door opening module with proximity sensor. Dimensions (H x W): 95 x 90 mm/ 3,74 x 3,54 inches.

1158/46

Steel door opening module with keypad. Dimensions (H x W): 95 x 90 mm/3,74 x 3,54 inches.

1158/47

DDA Stainless steel module with call feedback with voice messages and LED for system status check. Dimensions (H x W): 95 x 90 mm/3,74 x 3,54 inches.

1158/48

Stainless steel ILA module for hearing-aid users. Dimensions (H x W): 95 x 90 mm/3,74 x 3,54 inches.

1083/17

16 button add-on module for digital systems. To be used with 2Voice systems.

1083/6

2 Voice digitised loudspeaking unit with 2 buttons on 2 modules.

1083/62

2 Voice outside video station with 2 buttons on 2 modules.

1039/74

IPerVoice outside video station with 2 buttons on 2 modules.

1158/311

Housing with hood on 1 row for 1 module with wall frame and frame. Dimensions (H x W x D): 151,5 x 157 x 79 mm/5,96 x 6,18 x 3,11 inches.

1158/312

Housing with hood on 1 row for 2 modules with wall frame and frame. Dimensions (H x W x D): 241,5 x 157 x 79 mm/9,50 x 6,18 x 3,11 inches.

1158/313

Housing with hood on 1 row for 1 module with wall frame and frame. Dimensions (H x W x D): 331,5 x 157 x 79 mm/13,051 x 6,18 x 3,11 inches.

1158/314

Housing with hood on 1 row for 4 modules with wall frame and frame. Dimensions (H x W x D): 421,5 x 157 x 79 mm/16,59 x 6,18 x 3,11 inches.

1158/611

Rain hood on 1 row for 1 module. Dimensions (H x W x D): 151,5 x 157 x 50 mm/5,96 x 6,18 x 1,968 inches.

1158/612

Rain hood on 1 row for 2 modules. Dimensions (H x W x D): 241,5 x 157 x 50 mm/9,50 x 6,18 x 1,968 inches.

1158/613

Rain hood on 1 row for 3 modules. Dimensions (H x W x D): 331,5 x 157 x 50 mm/13,051 x 6,18 x 1,968 inches.

1158/614

Rain hood on 1 row for 4 modules. Dimensions (H x W x D): 421,5 x 157 x 50 mm/16,59 x 6,18 x 1,968 inches.

1158/624

Rain hood on 2 rows for 4 modules. Dimensions (H x W x D): 241,5 x 286 x 50 mm/9,507 x 11,259 x 1,968 inches.

1158/626

Rain hood on 2 rows for 6 modules. Dimensions (H x W x D): 331,5 x 286 x 50 mm/13,03 x 11,259 x 1,968 inches.

1158/801

1-module adapter kit for K-Steel flush-mounting box.

1158/802

2-module adapter kit for K-Steel flush-mounting box.

1158/803

3-module adapter kit for K-Steel flush-mounting box.

1072/8

Bibus Vop digitised loudspeaking unit with 1 button on 1 module



SALES NETWORK

EUROPE

AUSTRIA
URMET DIALOG GMBH
Vienna | T +43 1 8153508
www.dialog-urmet.at • info@dialog-urmet.at

BELGIUM
URMET BELGIUM SPRL
Brussels | T +32 2 5272224
www.urmet.be • info@urmetdomus.be

CZECH REPUBLIC
URMET s.r.o.
Teplice | T +420 4 17532204 | F +420 4 17535095
www.urmetdomus.cz • info@urmetdomus.cz

DENMARK
URMET DOMUS SCANDINAVIA
Oslo | T +47 23 039320 | F +47 23 039329
www.urmetdomus.no • post@urmetdomus.no

BULGARIA
URMET BULGARIA
4000 Plovdiv | T +359 889121312 | F +359 884768842
www.urmet.bg • info@urmet.bg

FINLAND
CLEVAR OY
Hyvinkaa | T +358 (0)19 422086
www.urmetdomus.fi • info@clevar.fi

FRANCE
URMET CAPTIV
Aulnay s. Bois | T +33 1 48198400
www.urmet-captiv.fr • mkt@urmet-captiv.fr

GERMANY
GROTHE GmbH
Hennef | T +49 2242 88900
www.grothe.de • info@grothe.de

GREECE
KARSON S.A.
Athens | T +30 210 3464461
www.karson.gr • karson@karson.gr

HOLLAND
ELBO TECHNOLOGY B.V.
Eindhoven | T +31 (0) 40 2679888
www.elbotechnology.nl • info@elbotechnology.nl

HUNGARY
URMET HUNGARY KFT.
Budapest | T +36 1 2166230
www.urmet.hu • urmetdomus@t-online.hu

IRELAND
NATCOM Ltd
Dublin | T +353 1 4977877
www.natcom.ie • info@natcom.ie

LATVIA
SIA PRISTIS
Riga | T +371 67336399 | F +371 67336398
www.pristis.com • pristis@pristis.lv

MALTA
P.A.L. - PACE ASSOCIATES LTD
Marsa | T +356 212 47111
www.palmalta.com • info@palmalta.com

NORWAY
URMET DOMUS SCANDINAVIA
Oslo | T +47 23 039320 | F +47 23 039329
www.urmetdomus.no • post@urmetdomus.no

POLAND
MIWI - URMET Ltd.
Lodz | T +48 42 6162100 | F +48 426162113
www.miwiurmet.com.pl
miwi@miwiurmet.com.pl

PORTUGAL
REXEL S.A.
Lisboa | T +351 218 937 283
www.rexel.pt • jgasp@rexel.pt

RUSSIA
URMET INTERCOM LTD
St. Petersburg | T +7 812 4413041
www.urmet.ru • spb@urmet.ru

SLOVAK REPUBLIC
URMET s.r.o.
Bratislava | T +421 25 3631142 | F +421 25 361144
www.urmetdomus.sk • info@urmetdomus.sk

SLOVENIA
URMET d.o.o.
Nova Gorica | T +386 (0)5 330 8150
www.urmet.si • info@vezave.si

SWEDEN
LANDBERG'S
Stockholm | T +46 8 6566940
office@landbergsab.se • mattias@landbergsab.se

TURKEY
CLINGIR ELEKTRONIK
Ankara | T +90 312 4461750 | F +90 312 4461755
Istanbul | T +90 212 2226737 | F +90 212 2228838
www.cilingirelektronik.com.tr
cilingir@cilingirelektronik.com.tr

ROMANIA
URMET&GERBER COMMUNICATION SRL
Bucharest, 43 Miletin Street, Sector 3, Romania
T +40 213200407 | F +40 213200408
www.urmet-gerber.ro
sales@urmet-gerber.ro

UNITED KINGDOM
URMET DOMUS COMMUNICATIONS AND SECURITY UK LTD
Great Notley | T +44 1376 556010
www.urmet.co.uk • sales@urmet.co.uk

NORTH AMERICA

UNITED STATES
Summit Systems Technologies
4575 Witmer Industrial Estates
Niagara Falls, NY 14305
T 1-866-786-6480
www.summit-st.net • info@summit-st.net

CANADA
MIRCOM TECHNOLOGIES Ltd.
Vaughan, Ontario | T +1 905 6604655
www.mircotech.com • mail@mircotech.com

LATIN AMERICA

ARGENTINA
PEPER.S.A.
Buenos Aires | T +54 11 47740812
peper@arnet.com.ar

CONDUVOX
RUA VISCONDE DE INHAUMA, 216 - SAUDE
T +55 11 5070 4110
www.conduvox.com.br • sergio@conduvox.com.br

ECUADOR
REITAL CIA. Ltda
Quito | T +593 3238074
info@reital.com.ec • www.reital.com.ec

MEXICO
UNFOLD DE MEXICO
Guadalajara, Jalisco | T +52 33 3630 3754
www.urmetdomus.com.mx
info@urmetdomus.com.mx

PANAMA
URMET PANAMA S.A.
Panama | T +507 264 0833 Fax +507 269 8227
urmet.panama@gmail.com

VENEZUELA
CITOFONO - OSCAR BRACHO RIERA
Barquisimeto | T +58 251 2552745
obracho@cantv.net

OCEANIA

AUSTRALIA (NSW - QLD - SA - WA - ACT - NT)
URMET HOME & BUILDING SOLUTIONS Pty Ltd t/as VIDEO INTERCOM
Rozelle Australia NSW | T +61 2 95552715
www.videointercom.com.au
sales@videointercom.com.au

NEW ZEALAND
AUSTRALIA (VIC - TAS) MTS INTERCOMS
Melbourne Australia VIC | T +61 3 95536888
www.mtsintercoms.com.au
sales@mtsintercom.com.au

AFRICA

DJIBOUTI
ESP
Djibouti | T +253 828522
mahamoud@espdjibouti.com

EGYPT
ORTI
Giza | T +20 2 7616661 | F +20 2 7605615
orti@link.net

LIBYA
BUKRA ELECTRIC MATERIAL
Tripoli | T +218 21 334 0914 | F 218 21 4836852
www.bukra-electric.com • info@bukra-electric.com

MOROCCO
OMATEC S.A.R.L.
Casablanca | T +212 522 258532 | F +212 522 258730
omatec@casanet.ma omatec_electric@menara.ma

ELKRON MAROC S.A.R.L.
Casablanca | T +212 522 991998 | F +212 522 992499
info@elkronmaroc.com

NIGERIA
AITEK NETWORK SYSTEM LTD
Ikeja, Lagos | T +234 1 7914635 | F +234 1 4936433
info@aitek-network.com

BASSCOMM
Ikeja, Lagos | T +234 (702) 8136980 | F +234 1 8917310
www.basscommng.com/index.html
ifeyinwan@basscommgroup.com

TUNISIA
STEDOM
Ariana | T +216 71231496 | F +216 71231496
sami.hachicha@gnet.tn

SOUTH AFRICA
ELLIES Electronics
Johannesburg | T +27 (11) 490 3800
www.ellies.co.za • sales@ellies.co.za

MIDDLE EAST

GIORDANIA
TECHNOLINKS
P.O. Box 910642 Amman 11191 Jordan
T + 96264649751 | F + 96264649752
technolinks@technolinks.com.jo

OMAN
GROUP 4 SECURICOR SECURITY SYSTEMS LLC
P.O. Box 1625, Ruwi Postal Code 112
Sultanate of Oman
T +968 24706081/24702059 [Extn. 395]
F +968 24705865
rajat.bhambri@om.g4s.com

GENETCO
P O Box 3139, Ruwi 112 Sultanate of Oman
T +968 24706081/24702059 [Extn. 395]
F +968 24705865
sekar@genetco.net • www.genetco.net

CIPRO
K.S. SAVVIDES & SON LTD.
Nicosia | T +357 2 673233 | F +357 2 673332
kssouxe@cytanet.com.cy

IRAN
SIMARAN P.J.S. Co.
Tehran | T +98 21 8833824 | F +98 21 8835073
info@simaran.com

ISRAEL
GERBER COMMUNICATION & SECURITY Ltd
Lazarov | T +972 39627888 | F +972 39624888
navi@gerber-com.net

KUWAIT
IHSAN EST.
Kuwait City | T +965 2413944 | F +965 2413955
ihsancom@qualitynet.net

SYRIA
BTC - BUILD TECH CENTER
Kafarsouseh | Damascus | Syria P.O.Box: 3565
T 011 2146846 | F 011 2146847 | F 011 2146845
info@btc-sy.com • www.btc-sy.com

LEBANON
SACOTEL S.A.L.
Beirut | T +961 1 613224/5/6 | F +961 1 397360
www.sacotel.com.lb • sacotel@sacotel.com.lb

U.A.E.
SIBCA ELECTRONICS
Abu Dhabi | T +971 2 6774861 | F +971 2 6782009
sibcael@emirates.net.ae

Dubai | T +971 4 3362216 | F +971 4 3362082
sibca@emirates.net.ae

Al Ain | T +971 3 7518080 | F +971 3 7519280
sibcaaln@emirates.net.ae

GULF WIRELESS TELEVISION CO.
Dubai | T +971 4 2626778 | F +971 4 3346068
gulfwire@emirates.net.ae

AL GURG ELECTRONICS
Dubai | T +971 4 2626778 | F +971 4 2626169
deepak@age-uae.com

FAR EAST

CHINA
URMET ELECTRONICS Ltd
Huizhou, GD | T +86 752 2097968
www.urmet.cn • sales@urmet.cn

HONG KONG
URMET JES LIMITED
Hong Kong | T +852 2 5153866
jeshk@netvigat.com

INDIA
ALBA URMET COMMUNICATION AND SECURITY PVT. LTD.
Gurgaon | T +91 124 4300630
www.albaurmet.com • sales@albaurmet

INDONESIA
PT. EPCON Mitra Guna
Jakarta | T +62 21 5322448
www.epcon.co.id • epcon@epcon.co.id

SOUTH ASIA PACIFIC
URMET ASIA PACIFIC PTE LTD
10 Jalan Kilang Ioffi Bukit Merah #03-02
Sime Darby Enterprise Centre | Singapore 159410
T +65 6273 2766 | F +65 6273 0766
sales@urmetasiapac.com

MALAYSIA
URMET DOMUS (M) Sdn Bhd
1-18, 1st floor, JALAN PANDAN PRIMA 2,
Kuala Lumpur, Malaysia | T +6 03-9285 4222
F +6 03-9284 7222
urmet@urmetdomus.com.my



All Urmet products bear the **CE** mark.

Urmet S.p.A. reserves the right to make changes to its products at any time without prior notice.

www.urmet.com | info@urmet.com

2Voice, iPerVoice and iPerView are trademarks of Urmet S.p.A.

Concept: comunico.info - Turin, Italy
Printed by: Servizi Tipografici Carlo Colombo - Rome, Italy

Printed in November 2012.



urmet

URMET S.p.A.

Via Bologna, 188/C | 10154 TORINO (ITALY)

Switchboard Phone +39-011.24.00.000

Export dept. Phone +39-011.24.00.250/256

Fax +39-011.24.00.296

www.urmet.com | info@urmet.com

Customer Service +39-011.23.39.810